



AN ISO 9001 : 2015 CER COMPANY



PULSE

KAREIN APNE GHARKO UPGRADE

20
24

PRODUCTS & PRICING
MANUAL

bright world in an
right light

About Us

We "pulse electronics & control" are leading manufacturers and suppliers of electrical Lighting, L.E.D. Driver, L.E.D. Lighting & control products which are Voltage stabilizer, single phasing preventer, panel Hooter, on delay Timer & 24 Hours Multy Range Timer etc. Our diversified range of products include consumer, commercial and industrial lighting as well as street lighting as well as ballasts and other products

For over four decades, pulse has been at the forefront of the electrical industry, introducing the very best that technology has to offer in the Lighting devices. Our products not only understood your present needs, but some, even your future ones. Developed using processes that have been refined over the years, our products made you smile with joy and satisfaction. The story of creating innovative, high-quality products continues in the field of LED manufacturing. We guarantee, that like every product that we manufacture, the LEDs we make are innovative, aesthetically pleasing, and energy efficient along with being easy to maintain and replace. As always, we continue to focus on delivering customer delight through value for money products and reliable service, each and every time. We welcome you to witness the exciting developments in the world of LEDs by Pulse. It's your imagination come true.

PRODUCT CATEGORIES

Indoor Light

LED PC Panel Light
LED Surface Ring Only
LED Surface Panel Light
LED Down Light (Crysta)
LED Down Light (Plasto)
LED 2x2 Panel Light
LED 2x2 Surface Panel Light
LED Rainbow Junction Light
LED Deep Junction Light
LED Double colour Panel Light
LED Dual Jelly Panel Light
LED PC Cob Light
LED Cob Light
LED Deep Cob Light (Ossam)
LED Deep Cob Light (Optra)
LED Deep Cob Light (Gravity)
LED Deep Cob Light (Bolt)
LED Deep Cob Light (Prism)
LED Deep Cob Light (Honey Bee)
LED Deep Cob Light (Spark Gold)
LED 360 Sf Movable Cylinder
LED Deep Cob Light (Clint Detachable)
LED Deep Cob Light (Dwell Curve)
LED Surface Cylinder Light (Honey Bee)
LED Pop Up Pul Out Cob
LED Magnetic Track
LED Magnetic Light
Deep Concealed & Surface Cob Led Light
LED Cylinder Light
LED Button Fitting Light
LED Track Light
LED Drum Light
LED Linea Light

LED Surface Ceiling Light
LED Border Less Surface Panel
LED PC Striker Light
LED Tube Light
LED Rope Light
LED Streep Light
LED Profile
LED Hanging Profile Light

Outdoor Light

LED Flood Light slim glass
LED Flood Backchoke Light
LED Street Light (Glass)
LED Street Light (Lens)
LED Highbay Light
LED Well Glass Light
LED Driver
LED Foot Outdoor Light
LED KOutdoor Light
LED Ball Outdoor Light
LED Eye Wall Light
LED Spike Light
LED Foot Light Council
LED 2Pin Night Lamp
LED Bulkhead Fitting Light
LED Gate light
Led Lamp Gate Light (taj)
Led Lamp Gate Light (cube)
Led Gate Light (minar)
Led Ring Post Light
Led Lamp Bollard



Indoor Lights





LED PC PANEL

Square & Round

Model: Platinum

MODEL	CUTOUT SIZE	PRICE	DIS.
3 WATT LED PC PLATINUM PANEL LIGHT	3X3 INCH		
8 WATT LED PC PLATINUM PANEL SQUARE	4x4 INCH		
12 WATT LED PC PLATINUM PANEL SQUARE	5X5 INCH		
15 WATT LED PC PLATINUM PANEL SQUARE	5X5 INCH		
15 WATT (3IN1) PC PANEL SQUARE & ROUND	5X5 INCH		
18 WATT LED PC PLATINUM PANEL SQUARE	6X6 INCH		
18 WATT (3IN1) PC PANEL SQUARE & ROUND	6X6 INCH		
22 WATT LED PC PLATINUM PANEL SQUARE	8X8 INCH		



MODEL	CUTOUT SIZE	PRICE	DIS.
8 WATT 4*4 RING	4X4 INCH		
12 WATT / 15 WATT RING	5X5 INCH		
18 WATT RING	6X6 INCH		
22 WATT RING	8X8 INCH		

LED PC SURFACE PANEL LIGHT

Square & Round
Model: Platinum Surface



MODEL	BODY SIZE	PRICE	DIS.
8 WATT SURFACE LED PANEL SQUARE & ROUND	4X4 INCH		
15 WATT SURFACE LED PANEL SQUARE & ROUND	5X5 INCH		
18 WATT SURFACE LED PANEL SQUARE & ROUND	6X6 INCH		
22 WATT SURFACE LED PANEL SQUARE & ROUND	8X8 INCH		



LED DOWN PANEL

Square & Round
Model: Crysta
Body: Metel & Pc



MODEL	CUTOUT SIZE	METEL PRICE	PC. PRICE	DIS.
12 WATT DOWN PANEL SQUARE & ROUND	4X4 INCH			
18 WATT DOWN PANEL SQUARE & ROUND	5X5 INCH			
22 WATT DOWN PANEL SQUARE & ROUND	6X6 INCH			



LED DOWN PANEL LIGHT

Round
Model: Plasto
Body: Pc

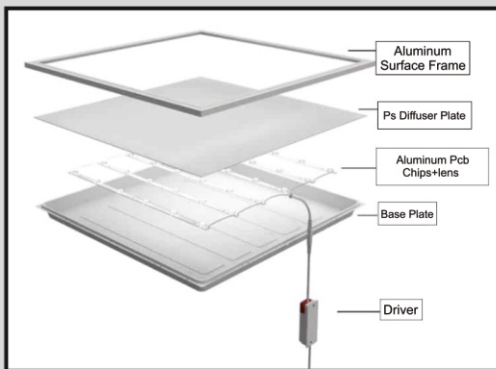


MODEL	CUTOUT SIZE	PRICE	DIS.
15 WATT DOWN PANEL LIGHT ROUND	5X5 INCH		
20 WATT DOWN PANEL LIGHT ROUND	6X6 INCH		



2X2 LED PANEL LIGHT

MODEL	CUTOUT SIZE	COUNCIL PRICE	SURFACE PRICE
48 WATT 2X2 LED PANEL LIGHT	24X24 INCH		



Body Colour

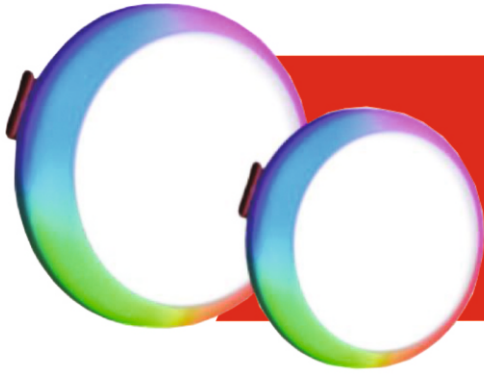
White



2X2 LED SURFACE PANEL LIGHT



MODEL	SIZE	COUNCIL PRICE	SURFACE PRICE
48 WATT 2X2 LED SURFACE PANEL LIGHT	25X25 INCH		



LED RAINBOW JUNCTION LIGHT

MODEL	CUTOUT SIZE	COUNCIL PRICE
8 WATT LED RAINBOW JUNCTION (CONCEALED) LIGHT	50MM	
15 WATT LED RAINBOW JUNCTION (CONCEALED) LIGHT	50MM	



Pulse®

INSTALLATION GUIDANCE

FOLLOW THE INSTALLATION PROCESS ITS RECOMMENDED THAT YOU USE ALL THE DETAILS PROPERLY

OPTION 1 : JUNCTION BOX

- Identify the Junction box location.
- Connect the wires from the fixture to power supply
- Attach the Down Light to the Junction box.

OPTION 2 : FALLS CEILING

- Identify fixture location and cut rough-in hole as per given cutout dimensions.
- Connect the wires from the fixture to power supply
- Fix the spring connectors in to place and push the light into the ceiling

Directions : Turn off and on the switch for switching color modes. ↑ ↓



LED DEEP JUNCTION LIGHT



MODEL	CUTOUT SIZE	COUNCIL PRICE
5 WATT LED DEEP JUNCTION (CONCEALED) LIGHT	60MM	
5 WATT LED DEEP JUNCTION (CONCEALED) 3 IN 1	60MM	
7 WATT LED DEEP JUNCTION (CONCEALED) LIGHT	75MM	



DOUBLE COLOUR PANEL

Square & Round
Model: Dual



MODEL	CUTOUT SIZE	COUNCIL PRICE	SURFACE PRICE
6 WATT DOUBLE COLOUR PANEL SQUARE & ROUND	3X3 INCH		
12 WATT DOUBLE COLOUR PANEL SQUARE & ROUND	5X5 INCH		
18 WATT DOUBLE COLOUR PANEL SQUARE & ROUND	6X6 INCH		



DUAL JELLY LED PANEL

Square & Round
Model: Jelly



MODEL	CUTOUT SIZE	COUNCIL PRICE	SURFACE PRICE
6 WATT DUAL JELLY LED PANEL SQUARE & ROUND	3X3 INCH		
12 WATT DUAL JELLY LED PANEL SQUARE & ROUND	5X5 INCH		
18 WATT DUAL JELLY LED PANEL SQUARE & ROUND	6X6 INCH		



LED PC COB LIGHT

Round
Model: Flora Pvc



MODEL	CUTOUT SIZE	PRICE	DIS.
3 WATT LED COB LIGHT	55X55 MM		
3 WATT LED COB LIGHT (3 in1 RPB)	55X55 MM		
6 WATT LED COB LIGHT	75X75 MM		



LED COB LIGHT

Body: Metal
Model : Movable (PM 111)



MODEL	CUTOUT SIZE	PRICE	DIS.
3 WATT LED COB LIGHT	55 MM		
6 WATT LED COB LIGHT	72 MM		
12 WATT LED COB LIGHT	72 MM		
18 WATT LED COB LIGHT	92 MM		
24 WATT LED COB LIGHT	115 MM		
30 WATT LED COB LIGHT	130 MM		



DEEP COB LIGHT

Body: Metal
Model : Ossam (PM 112)



MODEL	CUTOUT SIZE	PRICE	DIS.
7 WATT WHITE COB	60 MM		
12 WATT WHITE COB	75 MM		
18 WATT WHITE COB	95 MM		



DEEP COB LIGHT

Black/White Rose Gold
Body: Metal
Model: Optra (Pm 113)



MODEL	CUTOUT SIZE	PRICE	DIS.
7 WATT ROSE GOLD/BLACK & WHITE COB	60 MM		
12 WATT ROSE GOLD/BLACK & WHITE COB	72 MM		
18 WATT ROSE GOLD/BLACK & WHITE COB	75 MM		

BK/BK, BK ROSE GOLD, WT/BK, WT/ ROSE GOLD



DEEP COB LIGHT

Black & White Rose Gold
Body: Metal
Model: Gravity (Pm I 14)



MODEL	CUTOUT SIZE	PRICE	DIS.
7 WATT ROSE GOLD/BLACK & WHITE COB	60 MM		
12 WATT ROSE GOLD/BLACK & WHITE COB	72 MM		
18WATT ROSE GOLD/BLACK & WHITE COB	85MM		



DEEP COB LIGHT

Body: Metal
(Pm I 15) Model: Bolt

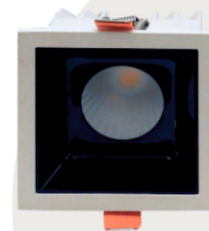


MODEL	CUTOUT SIZE	PRICE	DIS.
7 WATT COB LIGHT	60 MM		
12 WATT COB LIGHT	75 MM		
18 WATT COB LIGHT	88 MM		



DEEP COB LIGHT

Body: Metal
Model : Prisma (Pm I 16)



MODEL	CUTOUT SIZE	PRICE	DIS.
7 WATT PORNAT SQUARE COB	55 X 55		
2.7 WATT PORNAT SQUARE COB	55 X 115		
12 WATT PORNAT SQUARE COB	75 X 75		
2.12 WATT PORNAT SQUARE COB	75 X 240		



LED COB LIGHT

Body : Metal/PVC
Model : Honey Bee (PM:202)

PREMIUM FRONT OPENABLE MODEL



MODEL	CUTOUT SIZE	PRICE	DIS.
12 WATT PREMIUM FRONT OPENABLE COB	75MM		



DEEP COB LIGHT

Body : Metal
Model : Spark Gold



MODEL	CUTOUT SIZE	PRICE	DIS.
12 WATT PREMIUM ELECTROLATED COB	70MM		
15 WATT PREMIUM ELECTROLATED COB	70MM		



LED 360 SF MOVABLE CYLINDER

Body : Metal
Model : Movable Cylinder (PM:360)



MODEL	SIZE	PRICE	DIS.
12 WATT LED 360 SF MOVABLE CYLINDER	75MM X 95MM		



DEEP COB LIGHT

Body : Metal
Modal : Clint Detachable



MODEL	CUTOUT SIZE	PRICE	DIS.
7 WATT DEEP COB LIGHT	55MM		
12 WATT DEEP COB LIGHT	75MM		
18 WATT DEEP COB LIGHT	95MM		



DEEP COB LIGHT

Body : Metal
Model : Dwell Curve (pm : 222)



MODEL	CUTOUT SIZE	PRICE	DIS.
7 WATT CURVE HEATSINK COB	35MM		
12 WATT CURVE HEATSINK COB	45MM		



CYLINDER LIGHT (Honey Bee)

Body : Metal
Model : MP 118



MODEL	SIZE	PRICE	DIS.
7 WATT HONEY BEE CYLINDER	70MM X 55MM		
12 WATT HONEY BEE CYLINDER	90MM X 74MM		
18 WATT HONEY BEE CYLINDER	90MM X 74MM		



POP UP PUL OUT COB

Body : Metal
Model : PUP 112



MODEL	CUTOUT SIZE	PRICE	DIS.
7 WATT PUL OUT 360 DEEGREE COB	70MM		
12 WATT PUL OUT 360 DEEGREE COB	80MM		



MAGNETIC TRACK

Body : Aluminum
Modal : PMT 20



MODEL	SIZE	PRICE	DIS.
CONCEALED MAGNETIC TRACK (CODE M20-CLC1)	1 MT. 20MM		
CONCEALED MAGNETIC TRACK (CODE M20-CLC1)	2 MT. 20MM		
CONCEALED MAGNETIC TRACK (CODE M20-CLC1)	3 MT. 20MM		
SURFACE MAGNETIC TRACK (CODE M20-CLB)	1 MT. 20MM		
SURFACE MAGNETIC TRACK (CODE M20-CLB)	2 MT. 20MM		



MAGNETIC LIGHT

Body : Metal
Model : PM20-JD06, PM20-JD12, PM20-JD300,
PM20-JD600, PM20-JDS10W, PM20-JDS20W,
PM20-JDL6W, PM20-JDL12W



MODEL	WATT	PRICE	DIS.
MAGNETIC LIGHT LINIA (PM20-JD06)	6W		
MAGNETIC LIGHT LINIA (PM20-JD12)	12W		
MAGNETIC LIGHT PANEL (PM20-JD300)	10W		
MAGNETIC LIGHT PANEL (PM20-JD600)	20W		
MAGNETIC LIGHT CYLINDER (PM20-JDS10W)	10W		
MAGNETIC LIGHT CYLINDER (PM20-JDS20W)	20W		
MAGNETIC LIGHT L LINIA (PM20-JDL6W)	6W		
MAGNETIC LIGHT L LINIA (PM20-JDL12W)	12W		
MAGNETIC BUILT-IN POWER SUPPLY	100W		
MAGNETIC BUILT-IN POWER SUPPLY	200W		



DEEP CONCEALED & SURFACE COB LED LIGHT

MODEL	BODY SIZE	PRICE	DIS.
3WATT CONCEALED DEEP COB LIGHT	35MM (CUT OUT)		
3WATT SURFACE CYLINDER COB LIGHT	37MMX43MM		
5 WATT BLACK COB STRIKER (IP:63MA X 14MA)	219X100 MM		



LED CYLINDER LIGHT

Black Rose Gold



MODEL	BOSY SIZE	PRICE	DIS.
7 WATT LED CYLINDER LIGHT	70X54 MM		
12 WATT LED CYLINDER LIGHT	90X75 MM		
18 WATT LED CYLINDER LIGHT	150X92 MM		



LED BUTTON FITTING



MODEL	CUTOUT SIZE	PRICE	DIS.
2 WATT BUTTON LIGHT (WHITE/WW/NW)	32 MM		
2 WATT BUTTON LIGHT (RED/GREEN/BLUE/PINK)	32 MM		
2 WATT GOLD BUTTON LIGHT	27 MM		



LED TRACK LIGHT



MODEL	BODY SIZE	PRICE	DIS.
12WATT LED TRACK LIGHT	D50XH120 MM		
20WATT LED TRACK LIGHT	D65XH160 MM		
30WATT LED TRACK LIGHT	D75XH180 MM		
LED TRACK PATTI	1 METER		
LED TRACK PATTI	2 METER		



LED DRUM LIGHT



MODEL	BODY SIZE	PRICE	DIS.
7WATT LED DRUM LIGHT	D70XH50 MM		
12WATT LED DRUM LIGHT	D90XH60 MM		
18WATT LED DRUM LIGHT	D120XH60 MM		



LED LINEA



MODEL	BODY SIZE	CUT SIZE	PRICE
3WATT LENIA 1 HEAD	45X45 MM	35X35 MM	
6WATT LENIA 2 HEAD	45X67 MM	35X55 MM	
9WATT LENIA 3 HEAD	45X105 MM	35X95 MM	
12WATT LENIA 4 HEAD	45X147 MM	35X137 MM	

BODY COLOUR BK/ROSE GOLD, BK/BK, WH/ROSE GOLD, WH/BK



SURFACE CEILING LIGHT

Model: Glob

Model: Oliva

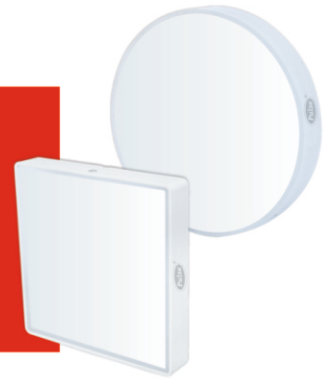


MODEL	BODY SIZE	PRICE	DIS.
SURFACE CEILING LIGHT (GLOB WHITE- W/W)	150X42 MM		
3 IN 1 CEILING LIGHT (GLOB)	135X42 MM		
12 W BORDER LESS SURFACE CEILING LIGHT (OLIVA)	124X32 MM		
15 W BORDER LESS SURFACE CEILING LIGHT (OLIVA)	146X32 MM		



BORDER LESS SURFACE LED PANEL LIGHT

Model: Slimy



MODEL	BODY SIZE	PRICE	DIS.
6 W BORDER LESS SURFACE CEILING LIGHT (SLIMY)	100X23 MM		
12 W BORDER LESS SURFACE CEILING LIGHT(SLIMY)	125X23 MM		
18 W BORDER LESS SURFACE CEILING LIGHT(SLIMY)	145X23 MM		



LED PC STRIKER LIGHT



MODEL	BODY SIZE	PRICE	DIS.
3 W LED STRIKER FITTING (WHITE- W/W)	68 MM		
3 IN 1 STRIKER FITTING	68 MM		
3 W LED STRIKER FITTING (GREEN / BLUE / PINK)	68 MM		



LED TUBE LIGHT



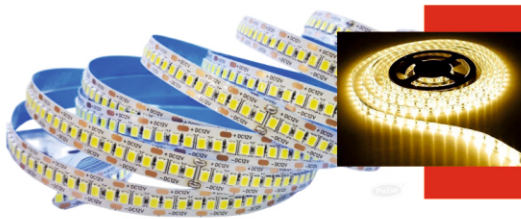
MODEL	SIZE	PRICE	DIS.
6w LED TUBE LIGHT	1 FEET		
10w LED TUBE LIGHT	2 FEET		
20w LED TUBE LIGHT	4 FEET		
36w LED TUBE LIGHT	4 FEET		



LED ROPE LIGHT



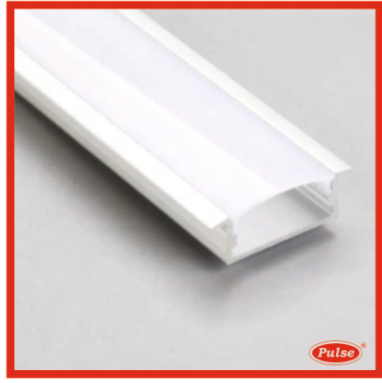
MODEL	SIZE	PRICE	DIS.
2835 WHITE / WARM WHITE	1 MTR		
2835 ICE BLUE / UMBER	1 MTR		
5730 120 LED WHITE / WARM WHITE	1 MTR		
5730 120 LED BLUE / GREEN / UMBER	1 MTR		



LED STREEP LIGHT



MODEL	STREEP LENGTH / SMPS BODY SIZE	PRICE	DIS.
LED streep 240 LED(White / Warm White)	1 MTR		
LED streep 120 LED(Red / Blue/ Green / ICE Blue)	1 MTR		
12V 5AMP SMPS DRIVER	170X53X18 MM		
12V 10AMP SMPS DRIVER	226X53X18 MM		
12V 15AMP SMPS DRIVER	308X53X22 MM		
12V 20AMP SMPS DRIVER	340X53X22 MM		



Model : 17MM SF

Model : 17MM CON

Length	Body Color	Dimension	MRP (For 1 mtr)
2 MTR	ANODIZED		107

Length	Body Color	Dimension	MRP (For 1 mtr)
2 MTR	ANODIZED		107



Model : 17MM DIP SF

Model : 17MM DIP CON

Length	Body Color	Dimension	MRP (For 1 mtr)
2 MTR	ANODIZED		167

Length	Body Color	Dimension	MRP (For 1 mtr)
2 MTR	ANODIZED		167



Model : 5MM SF

Length	Body Color	Dimension	MRP (For 1 mtr)
2 MTR	ANODIZED		122

Model : 5MM CON

Length	Body Color	Dimension	MRP (For 1 mtr)
2 MTR	ANODIZED		122



Model : 10MM SF

Length	Body Color	Dimension	MRP (For 1 mtr)
2 MTR	ANODIZED		145

Model : 10MM CON

Length	Body Color	Dimension	MRP (For 1 mtr)
2 MTR	ANODIZED		145



Model : 25MM SF

Length	Body Color	Dimension	MRP (For 1 mtr)
2 MTR	ANODIZED		200



Model : 25MM CON

Length	Body Color	Dimension	MRP (For 1 mtr)
2 MTR	ANODIZED		200

Model : 3535MM SF

Length	Body Color	Dimension	MRP (For 1 mtr)
2 MTR	ANODIZED		475



Model : 3535MM CON

Length	Body Color	Dimension	MRP (For 1 mtr)
2 MTR	ANODIZED		475

Model : 5035 SF

Length	Body Color	Dimension	MRP (For 1 mtr)
2 MTR	ANODIZED		578



Model : 5035 CON

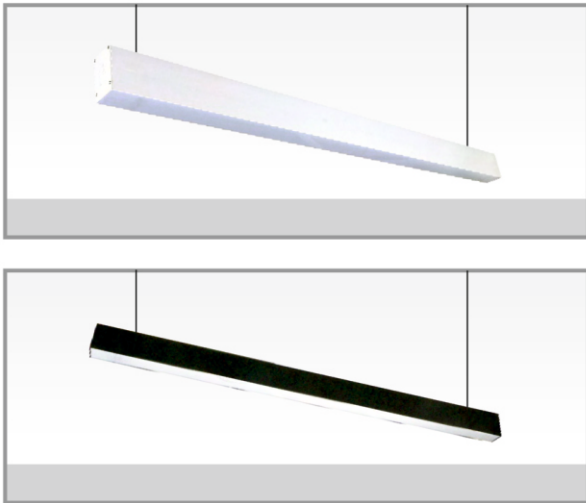
Length	Body Color	Dimension	MRP (For 1 mtr)
2 MTR	ANODIZED		578



LED HANGING PROFILE LIGHT

3K 4K 6K

PL -050



Model : PL -050

Power	Dimension	Body Colour	MRP	3 in 1 MRP
36W	1200x50x70	WH, BK		
50W	1800x50x70	WH, BK		

3K 4K 6K

PL -036



Model : PL -036

Power	Dimension	Body Colour	MRP
36W	1180x35x70	BLACK	



Outdoor Lights



LED FLOOD LIGHT SLIM GLASS MODEL



MODEL	BODY SIZE	PRICE	DIS.
30 WATT LED FOOD LIGHT SLIM GLASS MODEL	6X5 INCH		
50 WATT LED FOOD LIGHT SLIM GLASS MODEL	7X7.5 INCH		
100 WATT LED FOOD LIGHT SLIM GLASS MODEL	9X8 INCH		
150 WATT LED FOOD LIGHT SLIM GLASS MODEL	10X10.5 INCH		
200WATT LED FOOD LIGHT MINI MODEL	10X9.5 INCH		
220 WATT LED FOOD LIGHT SLIM GLASS MODEL	10X10.5 INCH		
300 WATT LED FOOD LIGHT SLIM GLASS MODEL	14.7X16.5 INCH		



BACK CHOKE LED FLOOD LIGHT



MODEL	BODY SIZE	PRICE	DIS.
50 WATT LED FOOD LIGHT BACK CHOKE GLASS MODEL	275X240X115 MM		
100 WATT LED FOOD LIGHT BACK CHOKE GLASS MODEL	300X240X115 MM		
150 WATT LED FOOD LIGHT BACK CHOKE GLASS MODEL	350X240X120 MM		
200 WATT LED FOOD LIGHT BACK CHOKE GLASS MODEL	400X300X140 MM		
300 WATT LED FOOD LIGHT BACK CHOKE GLASS MODEL	400X300X140 MM		
400 WATT LED FOOD LIGHT BACK CHOKE GLASS MODEL (1W LED)	400X300X140 MM		
400 WATT LED FOOD LIGHT BACK CHOKE GLASS MODEL(5050 LED)	400X300X140 MM		



LED STREET LIGHT GLASS MODEL



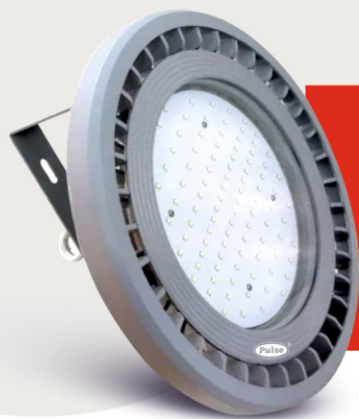
MODEL	MOUNTING SIZE	PRICE	DIS.
24 WATT LED STREET LIGHT	38 MM		
30 WATT LED STREET LIGHT	38 MM		
36 WATT LED STREET LIGHT	38 MM		
50 WATT LED STREET LIGHT	38 MM		
100 WATT LED STREET LIGHT	40 MM		



LED STREET LIGHT LENS MODEL



MODEL	MOUNTING SIZE	PRICE	DIS.
24 WATT LED STREET LIGHT LENS MODEL	38 MM		
36 WATT LED STREET LIGHT LENS MODEL	38 MM		
50 WATT LED STREET LIGHT LENS MODEL	38 MM		
100 WATT LED STREET LIGHT LENS MODEL	38 MM		



LED HIGHBAY LIGHT

Model: Cromp

Model: Leance



MODEL	BODY SIZE	PRICE	DIS.
50 WATT LED HIGHBAY LIGHT	179MM ROUND		
100 WATT LED HIGHBAY LIGHT	7.5X7 INCH		
150 WATT HEAVY HIGHBAY LIGHT	7.5X7 INCH		
200 WATT HEAVY HIGHBAY LIGHT	7.5X7 INCH		



LED WELL GLASS LIGHT



MODEL	BODY SIZE	PRICE	DIS.
40 WATT LED WELL GLASS FITTING	145X161 MM		
72 WATT LED WELL GLASS FITTING	191X207 MM		



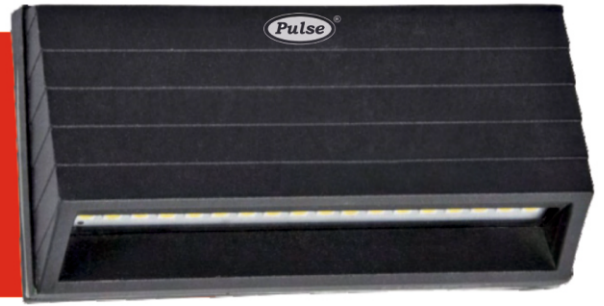
LED DRIVR



MODEL	BODY SIZE	PRICE	DIS.
3 WATT LED PANEL DRIVR 150:MA 300:MA	30X30 MM		
8-24 WATT LED PANEL DRIVR 300:MA	55X40 MM		
24 WATT LED DRIVR (IP65) 300:MA	60X27X22 MM		
30 WATT LED DRIVR (IP65) 900:MA	80X27X22 MM		
50 WATT LED DRIVR (IP65) 750:MA 1500:MA	85X35X25 MM		



LED FOOT OUTDOOR LIGHT



PL-2104

PL-2108

MODEL	BODY SIZE	PRICE	DIS.
4 WATT LED FOOT OUTDOOR LIGHT	D93X71X45 MM		
8 WATT LED FOOT OUTDOOR LIGHT	D150X71X45 MM		



PL-2503

LED K OUTDOOR LIGHT



PL-2506

MODEL	BODY SIZE	PRICE	DIS.
3 WATT LED K OUTDOOR LIGHT	D75X80X63 MM		
2X3 WATT LED K OUTDOOR LIGHT	D142X80X63 MM		



PL-4004

LED BALL OUTDOOR LIGHT



PL-4012

MODEL	BODY SIZE	PRICE	DIS.
1X2 WATT LED BALL OUTDOOR LIGHT	73cm x 73cm		
1X4 WATT LED BALL OUTDOOR LIGHT	73cm x 73cm		
1X4 WATT LED BALL OUTDOOR LIGHT (RGB)	73cm x 73cm		



LED EYE WALL LIGHT



MODEL	BODY SIZE	PRICE	DIS.
2X1WATT LED FOOT OUTDOOR LIGHT	D105X38XH78 MM		
4X1WATT LED FOOT OUTDOOR LIGHT	D115X38XH78 MM		
6X1WATT LED FOOT OUTDOOR LIGHT	D168X45XH78 MM		



LED SPIKE LIGHT



12W

MODEL	BODY SIZE WITH SPIKE	PRICE	DIS.
5 WATT LED SPIKE LIGHT (WW/GREEN)	L245 MM		
9 WATT LED SPIKE LIGHT (WW/GREEN)	L265 MM		
5 WATT LED SPIKE LIGHT (RGB)	L245 MM		
9 WATT LED SPIKE LIGHT (RGB)	L265 MM		
12 WATT LED SPIKE LIGHT (WW)	L266 MM		



LED FOOT COUNCIL LIGHT



MODEL	BODY SIZE	PRICE	DIS.
3 WATT LED FOOT COUNCIL LIGHT (GREY, BLACK WHITE)	D54X54 MM		



TWO PIN NIGHT LAMP



MODEL	BODY SIZE	PRICE	DIS.
(WHITE / WARM WHITE / GREEN / RED / BLUE)	42X25 MM		



LED BULKHEAD FITTING

Model: Ciaz Model: Oval



MODEL	BODY SIZE	PRICE	DIS.
10WATT LED BULKHEAD FITTING (CIAZ) (3K/4k/6K)	98X180 MM		
15WATT LED BULKHEAD FITTING (CIAZ) (3K/4k/6K)	117X232 MM		
15WATT LED BULKHEAD FITTING (OVAL) (3K/4k/6K)	100X220 MM		



LED GATE LIGHT

Model: Black Moon



MODEL	PIPE MOUNTING SIZE	BODY SIZE	PRICE	DIS.
15 WATT LED GATE LIGHT (ROUND/SQUARE)	55X60 MM	W135XH177 MM		
20 WATT LED GATE LIGHT (SQUARE)	70X75 MM	W176XH222 MM		
20 WATT LED GATE LIGHT (ROUND)	70X75 MM	W212XH220 MM		



LED LAMP GATE LIGHT

Body : PVC Modal : Taj



MODEL	PIPE MOUNTING SIZE	BODY SIZE	PRICE	DIS.
LED LAMP GATE LIGHT SUITABLE B22 HOLDER	50MM DIA	330HX190W MM		



LED LAMP GATE LIGHT

Body : PVC Modal : CUBE



MODEL	BODY SIZE	PRICE	DIS.
LED LAMP GAT LIGHT SUITABLE B22 HOLDER	150 X 160MM		



LED GATE LIGHT

Body : PVC Modal : MINAR



MODEL	PIPE MOUNTING SIZE	BODY SIZE	PRICE	DIS.
15 WATT LED GATE LIGHT (ROUND)	70MM DIA	260HX110W MM		

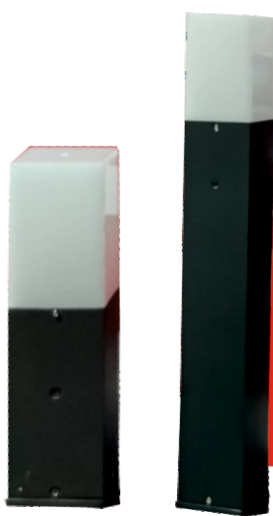


LED RING POST LIGHT

Body : Aluminum Dia Cast
 Modal : RIPO : 50



MODEL	BODY SIZE	POLE HOLE	PRICE	DIS.
50 WATT RING POST LIGHT	250X400X220 MM	75MM		



LED LAMP BOLLARD

Body : Aluminum Dia Cast
 Modal : Plane Cube



MODEL	BODY SIZE	PRICE	DIS.
BOLLARD LIGHT (SUTABAL FOR B22 LED LAMP) ROUND & SQUARE	300 MM		
BOLLARD LIGHT (SUTABAL FOR B22 LED LAMP) ROUND & SQUARE	600 MM		



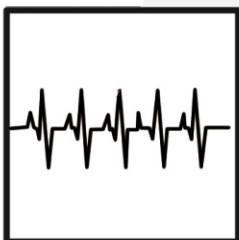
ELCB + MCB
ELECTRONIC SHOCK GUARD



WATER LEVEL
CONTROLLER



VOLTAGE STABILIZER



DIGITAL TIME SWITCH
& 10 AC STARTER

